



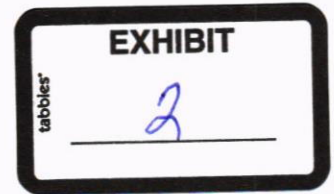
Farmers Electric Cooperative

A Touchstone Energy[®] Cooperative 

301 N. Hillcrest
Sulphur Springs, TX 75482

2000 I-30 E
Greenville, TX 75402

108 W. Marble
Wylie, TX 75098



April 11, 2018

Office of Hopkins County Judge
The Honorable Robert Newsom
Post Office Box 288
Sulphur Springs, TX 75483

Farmers Electric Cooperative Member: Victor H Rios, Jr
Service Order Number: 1804001958

Dear Judge Newsom,

Farmers Electric Cooperative, Inc. is requesting permission to construct electrical power distribution across County Road 3341, which is located approximately 1675' south of County Road 3338, in Hopkins County, Texas.

Site location map and construction sketches are enclosed. The construction sketch details the proposed work. All road crossing will have a minimum vertical clearance of 22 feet.

If you have any questions, please contact your field engineering representative Matt Walker at 903-453-0543 office, or 903-441-1368 mobile.

Please send approval back to our engineering group at: EngCC@farmerselectric.coop

Sincerely,

Matt Walker

Engineering Assistant
mwalker@farmerselectric.coop

Enclosures

Submitted by:
Linda Graham
Field Engineering Coordinator
Office: 903-453-0716 Fax: 903-453-0660
lgraham@farmerselectric.coop

Approved Denied

Date: 4-23-18

County Comments: Wade Beatty

CR 3338

HOPKINS

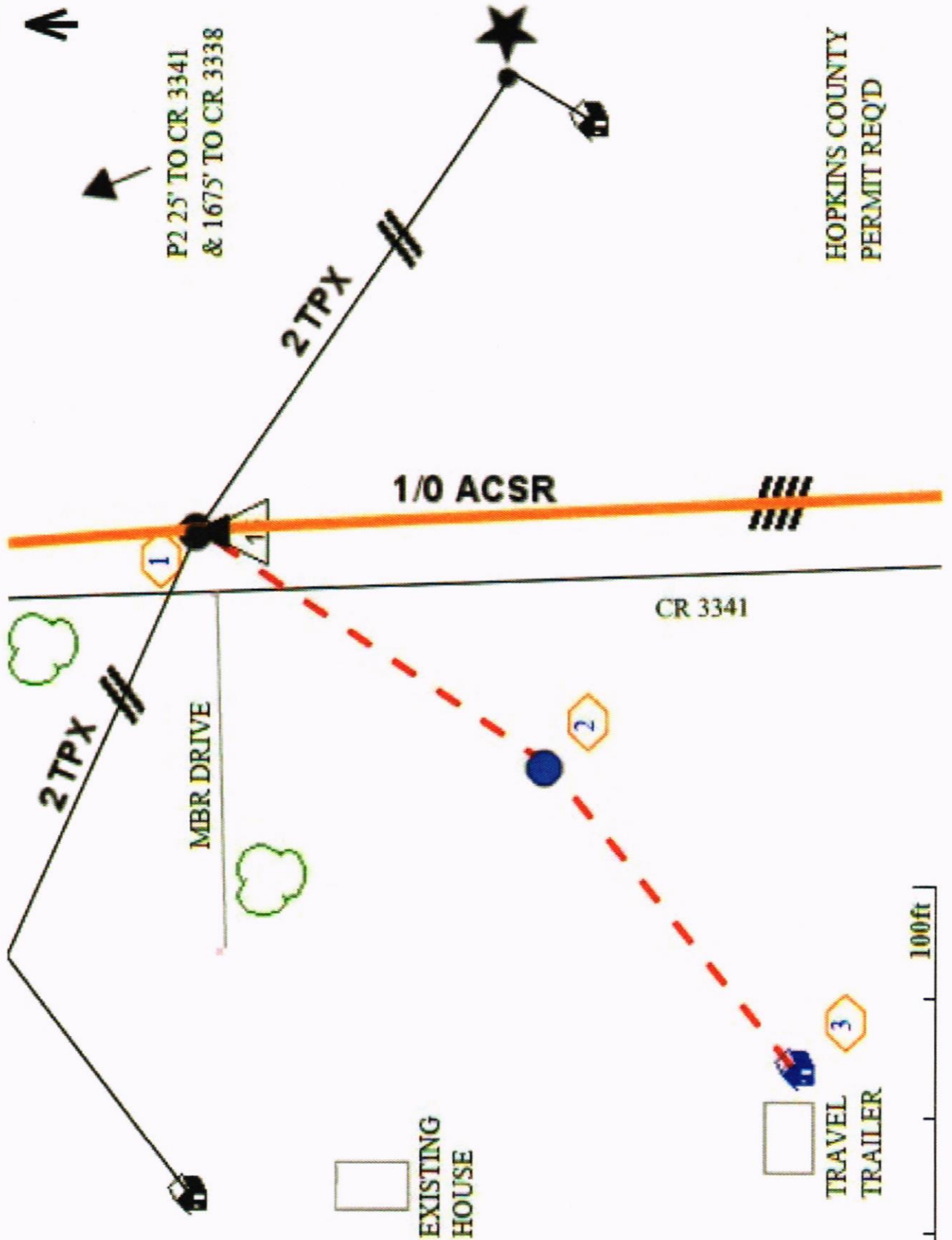
CR 3345

CR 3341



FARMERS ELECTRIC COOP
S/O 1804001958
VICTOR H RIOS JR
POLE 062819

7.2KV



P2 25' TO CR 3341
& 1675' TO CR 3338

HOPKINS COUNTY
PERMIT REQ'D

1/0 ACSR

CR 3341

2TPX

2TPX

MBR DRIVE

EXISTING
HOUSE

TRAVEL
TRAILER

100ft